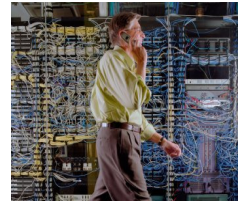




Engineer, Furnish & Install



At Fusion Solutions, we understand the needs of EF&I companies. You need experienced talent that can hit the ground running and stay until project completion. We cover a wide range of skill sets and equipment experience at the right price to fit each client's needs. All of our employees have undergone drug screens and background checks. Your success is our success.

We also understand the critical importance of meeting the deliverables and timetables that you get from your customers. We work with our clients to make sure that we follow all of their OSHA requirements.

Fusion Solutions has a solid track record of providing EF&I companies with experienced resources - when they need them and for just as long as they need them. After the project is over, so are your costs.

Roles for which we have supplied talent include:

<ul style="list-style-type: none"> • A & E <ul style="list-style-type: none"> • Site Acquisition Specialists • Real Estate Specialists • Zoning Specialists • Construction Managers • Project Managers • Wireless - Base Stations and Switches <ul style="list-style-type: none"> • ICI • O&M • Leads/Supervisors • Project Managers • Quality Auditors • Data Center, Turn-up & Test <ul style="list-style-type: none"> • Site Survey • Installers – Levels 1 - 4 • Supervisors • Power Systems <ul style="list-style-type: none"> • Installers – Levels 1 – 4 <ul style="list-style-type: none"> • -48 VDC • +24 VDC • Rectifiers 	<ul style="list-style-type: none"> • RF Planning & Engineering <ul style="list-style-type: none"> • Drive Testers • Analysts/Post-Processors • Design & Optimization • Specialty <ul style="list-style-type: none"> • E911/LMU Installers • DAS Installers • T1 Testers • Fiber Splicers <p>AREAS OF EXPERTISE</p> <ul style="list-style-type: none"> • Ericsson • Nokia Siemens Networks • Alcatel-Lucent • Huawei • Tellabs • Alvarion • Harris-Stratex • Ceragon • Dragonwave • Commscope/Andrew • TruePosition • Powerwave
---	--